



SOUTH YORKSHIRE: In work and in good health?

Gordon Dabinett

Professor for Regional Studies

Department of Town & Regional Planning

University of Sheffield

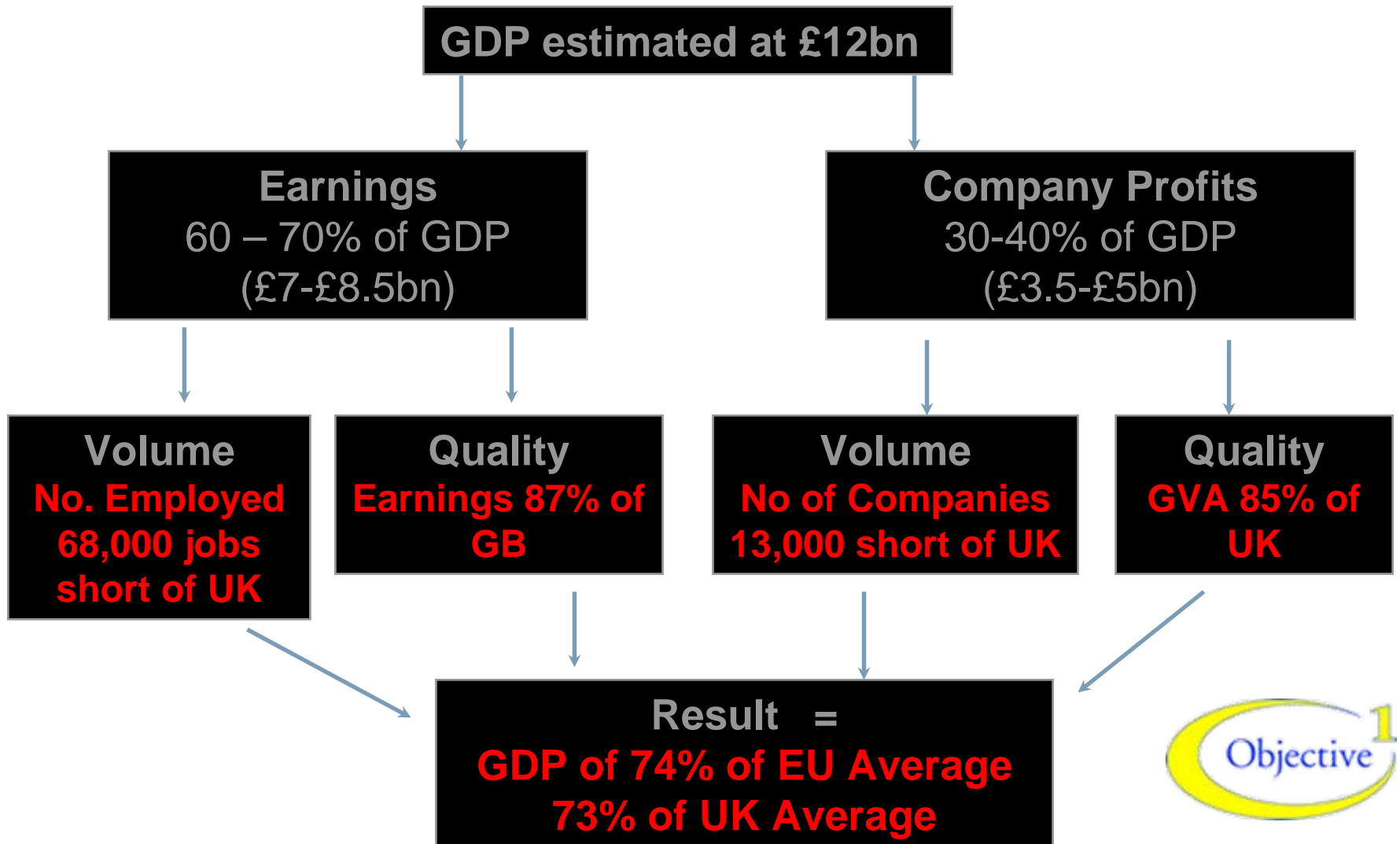
Is South Yorkshire Different?

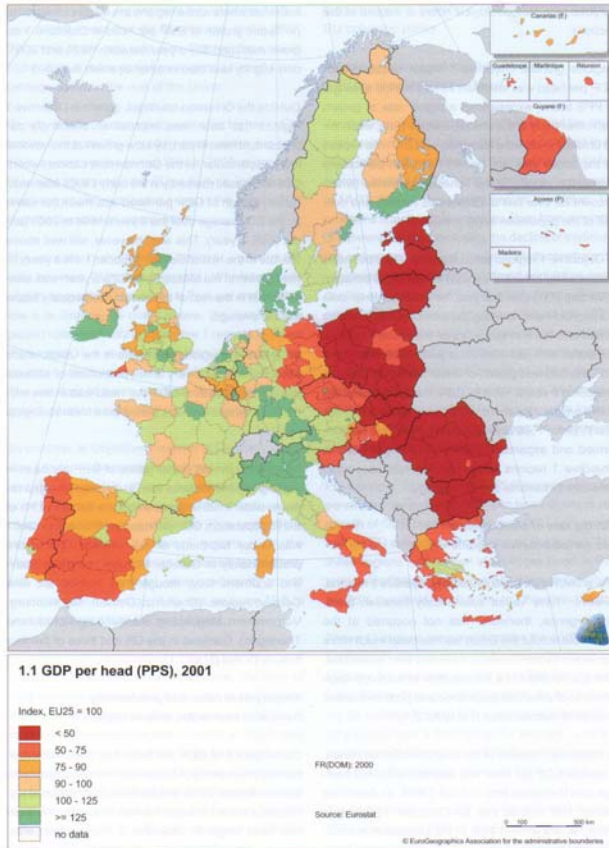
	South Yorks	Hants
Total population 2001	1.266 mill	1.240 mill
% Change 1991-2001	-1.7	+5.2
% Households with 2 or more cars	23.5	42.4
% in employment	56.1	67.5
% unemployment	4.1	1.9
% permanently sick	7.7	3.1
% students	7.5	5.3
% with degree	14.5	20.7
% with NO qualification	35.9	23.0

SOUTH YORKSHIRE: WORK



South Yorkshire 1999 : A lagging economic region.





	GDP / EU25	GDP 1995-2001	Unempl. %
Hamburg	187	+1.8	9.0
Helsinki	154	+5.9	5.8
Dublin	142	+9.5	3.8
Hants	113	+3.9	3.5
S.Yorks	85	+2.0	5.2
Leipzig	77	+0.3	23.1

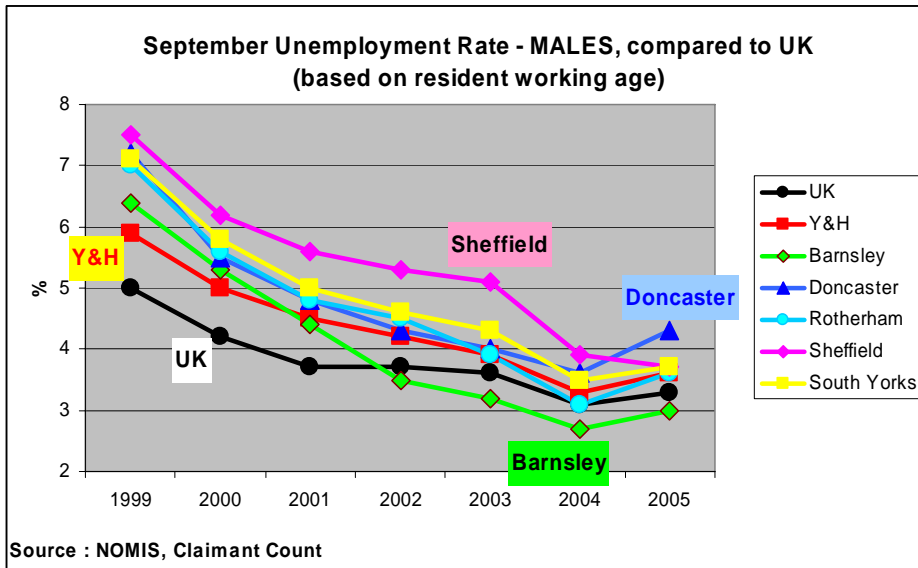
Post 2000: Investment & A Diversifying Economy.



Getting back to work...

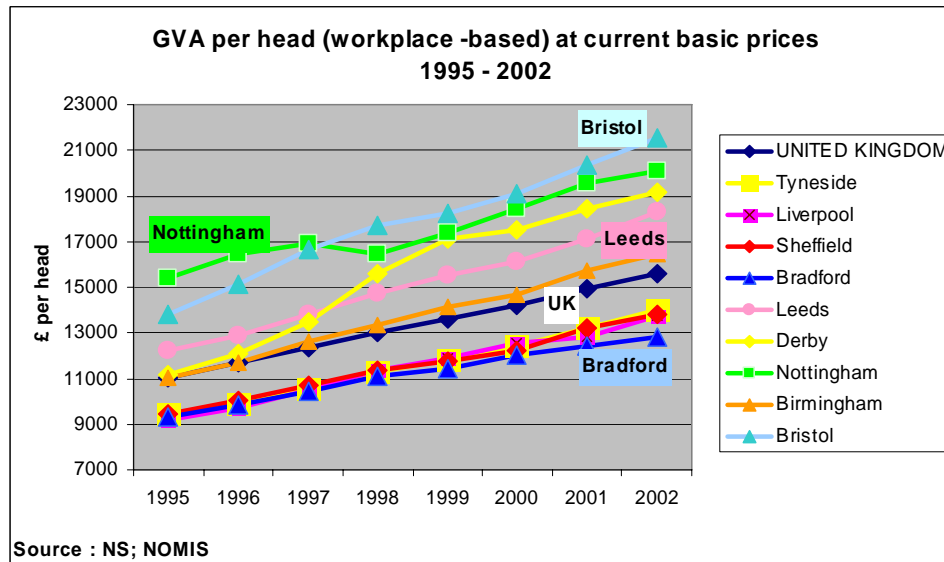
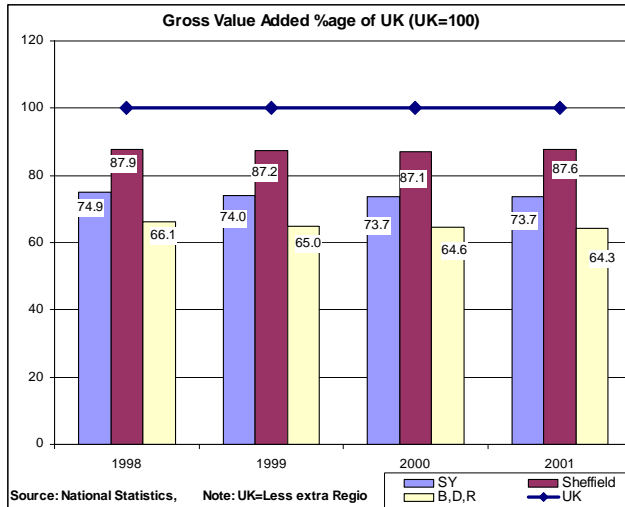
	Employment		% Economically Active	
	South Yorkshire	GB	South Yorkshire	GB
2000	483,500	25.2m	58.7	68.8
2001	487,800	25.5m	59.4	69.1
2002	501,500	25.5m	61.3	68.9

Lower Unemployment...



%	South Yorkshire	UK
2000	4.0	3.0
2001	3.6	2.7
2002	3.2	2.6
2003	3.0	2.6
2004	2.5	2.3

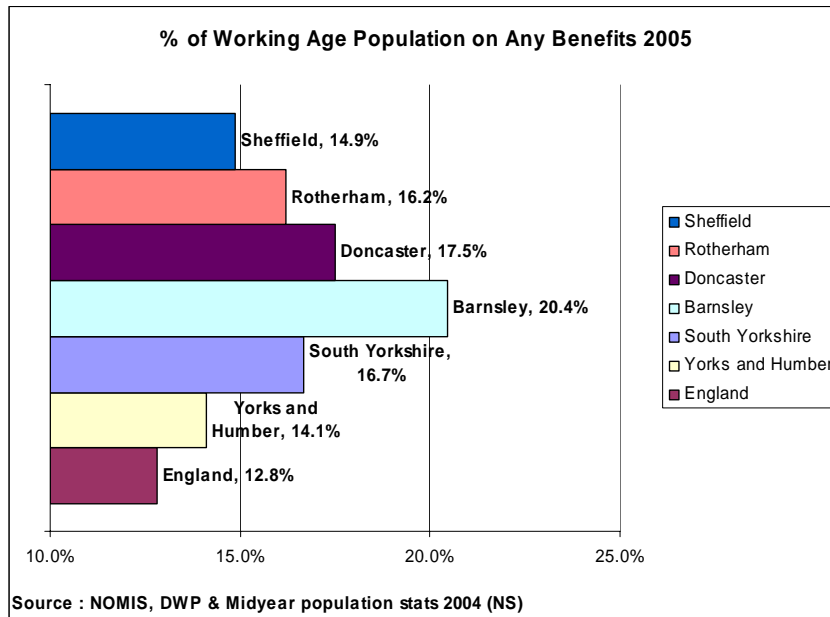
And wealth creation?



EPO patents/million population:

Leipzig	46
South Yorkshire	53
Dublin	91
Hamburg	204
Hampshire	234
Helsinki	588

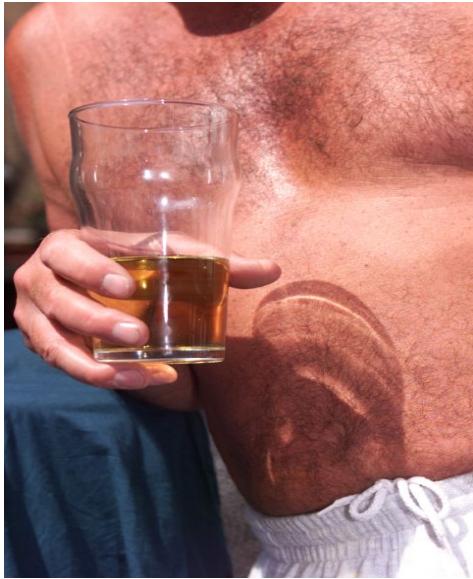
Residual or structural problems?



	<i>2000</i>	<i>2005</i>
<i>Barnsley</i>	<i>34.9</i>	<i>44.0</i>
<i>Doncaster</i>	<i>36.8</i>	<i>43.8</i>
<i>Rotherham</i>	<i>41.1</i>	<i>48.7</i>
<i>Sheffield</i>	<i>41.1</i>	<i>46.1</i>
England	49.2	56.5

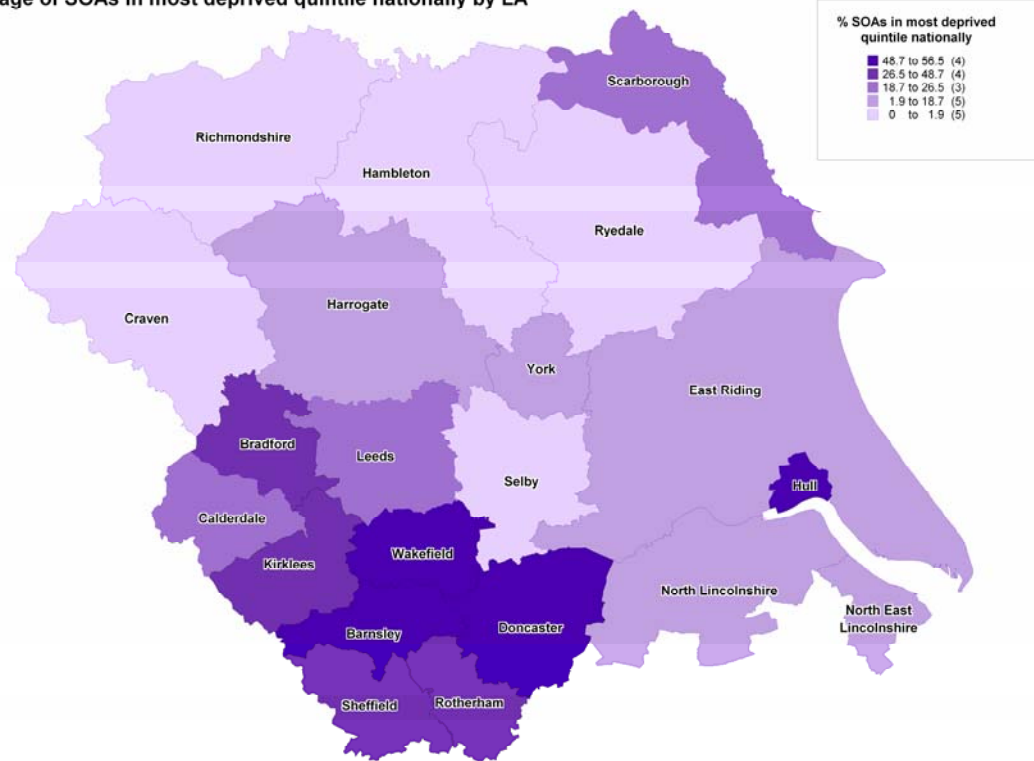
School Leavers with 5 GCEs/A-C.

SOUTH YORKSHIRE: HEALTH



Spatial concentration of poor health and disability.

ID 2004 - Health and disability domain score
Percentage of SOAs in most deprived quintile nationally by LA



In general the health of the people of South Yorkshire is improving. The main concern is that the health experience of some parts of the population does not improve as fast as the majority, furthering inequalities.

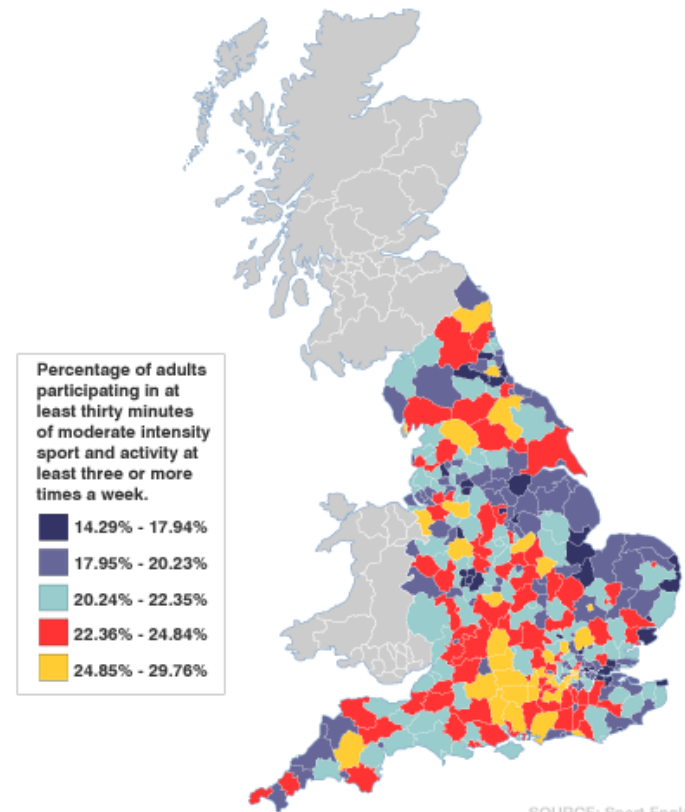
2001 census	South Yorkshire	Barnsley	Doncaster	Rotherham	Sheffield	Hants	Eng & Wales
% all with long-term illness	22.3	25.2	22.9	22.4	20.6	14.9	18.2
% all not in good health	12.1	14.1	12.0	12.1	11.3	6.6	9.2
% 16-74 yr olds permanently sick	7.7	10.4	8.4	7.9	6.2	3.1	5.5

Lifestyles and health...

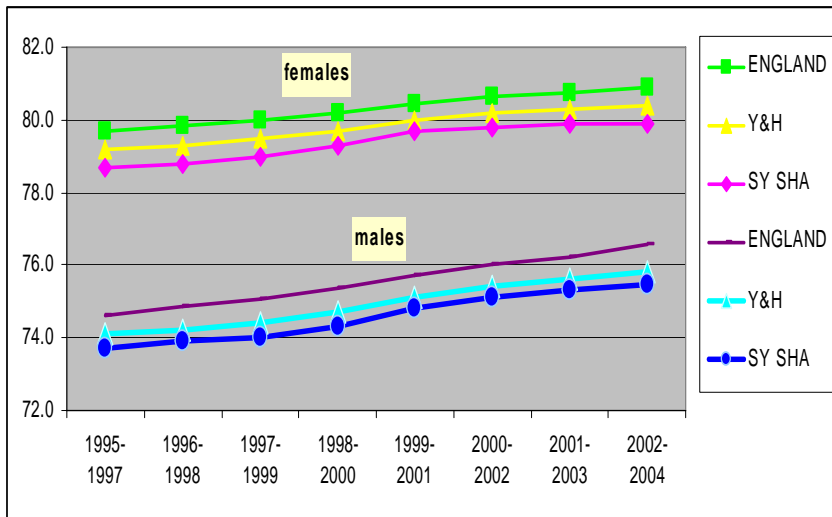
South Yorkshire has the highest proportion of smokers in the country, (*over 32%*) accounting for 2700 deaths a year.

60% of these are males. Rates of smoking are widely known to correlate with social class.

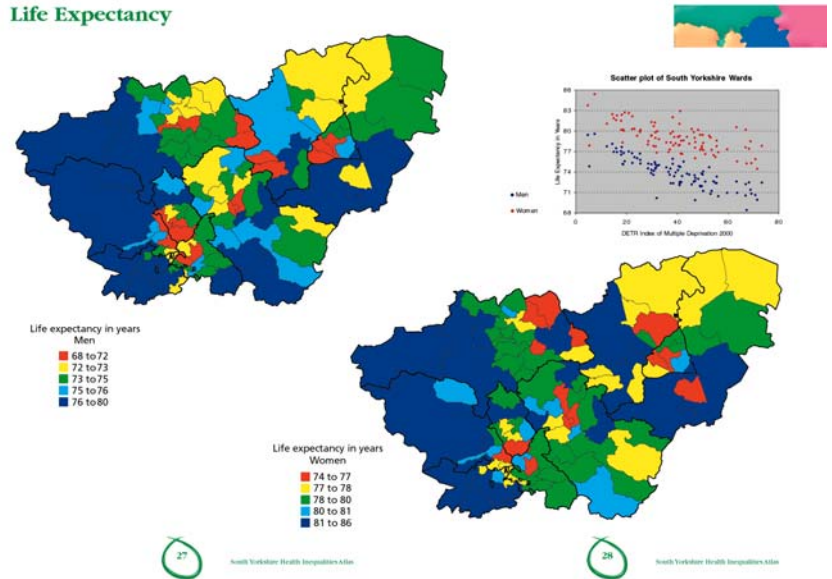
ACTIVE PEOPLE SURVEY



Shorter lives...



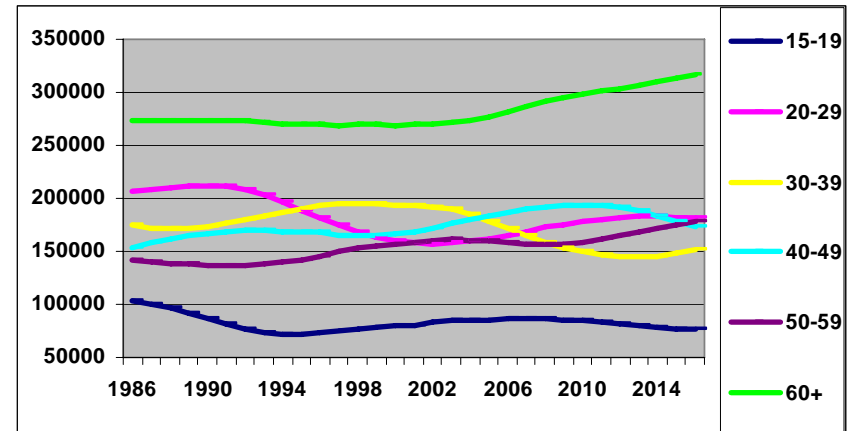
Life Expectancy



More caring for others

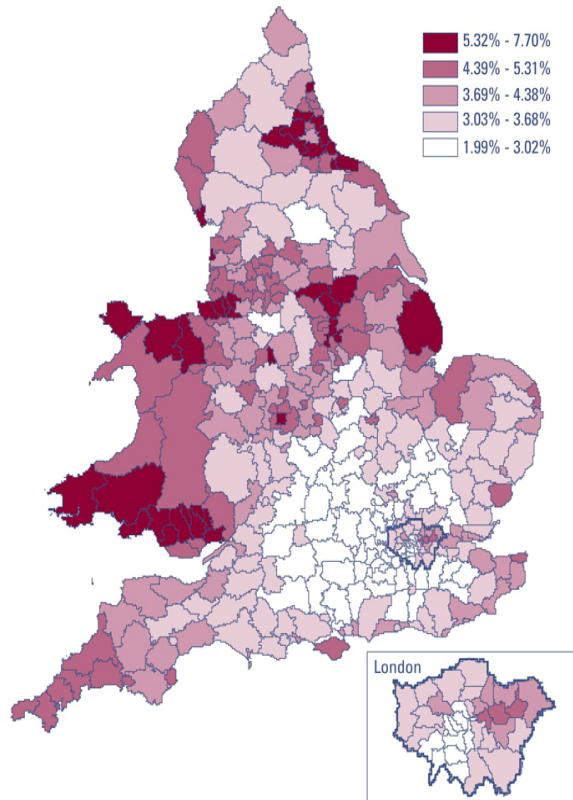
Many of those needing care are older people, and much of this care is provided by other older people or people in late middle age.

In general, people providing care for 20 or more hours per week are more likely to have health problems themselves and to live in poorer areas, and less likely to have educational qualifications, be in employment or be home owners.



South Yorkshire Age Profile 1986 - 2016

Figure 1: Proportion of the population aged 16 and over in England and Wales providing unpaid care for 20 hours or more per week in each local authority, 2001

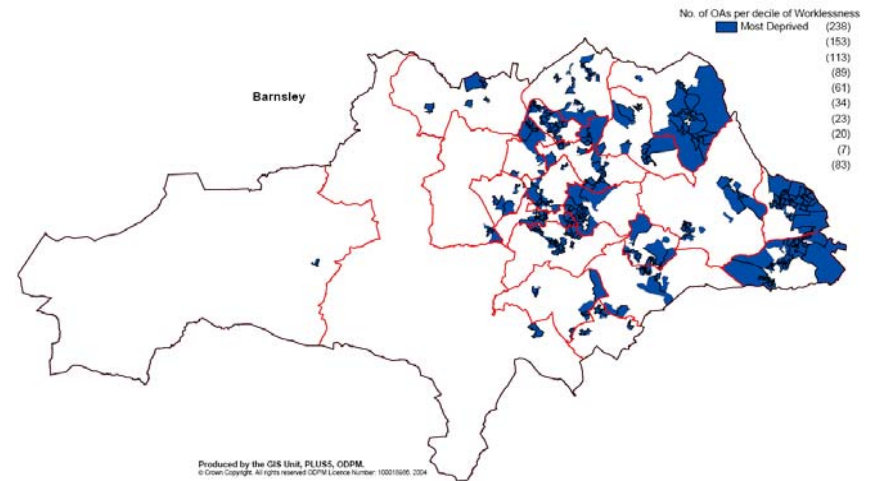


Source: Census data in Young, Grundy and Kalogirou (2005), Population Trends vol 120, Office for National Statistics

2001 census	Unpaid carers %	50+ hours caring %
England	9.9	2.0
South Yorks	11.4	2.8
Barnsley	12.0	3.1
Doncaster	11.0	2.8
Rotherham	12.2	3.0
Sheffield	10.9	2.5

Living without work...

In recent years, the term unemployment has been largely overtaken by the concept of *worklessness*, which refers to the kind of long-term, chronic unemployment experienced by whole communities of people in severely deprived areas. Unemployment is perceived not so much as a temporary situation than a long-term / permanent condition, and people's lifestyles are adjusted accordingly. The aspirations of people growing up in this type of environment are understandably low.



SOUTH YORKSHIRE: HEALTH- WORK ISSUES

- Pursuit of high growth and high value economic development.
- Residual and past-dependent behaviours and future demographic conditions.
- Reproduction of inequalities and segregation.
- Productivity, labour conditions and holistic health outcomes.